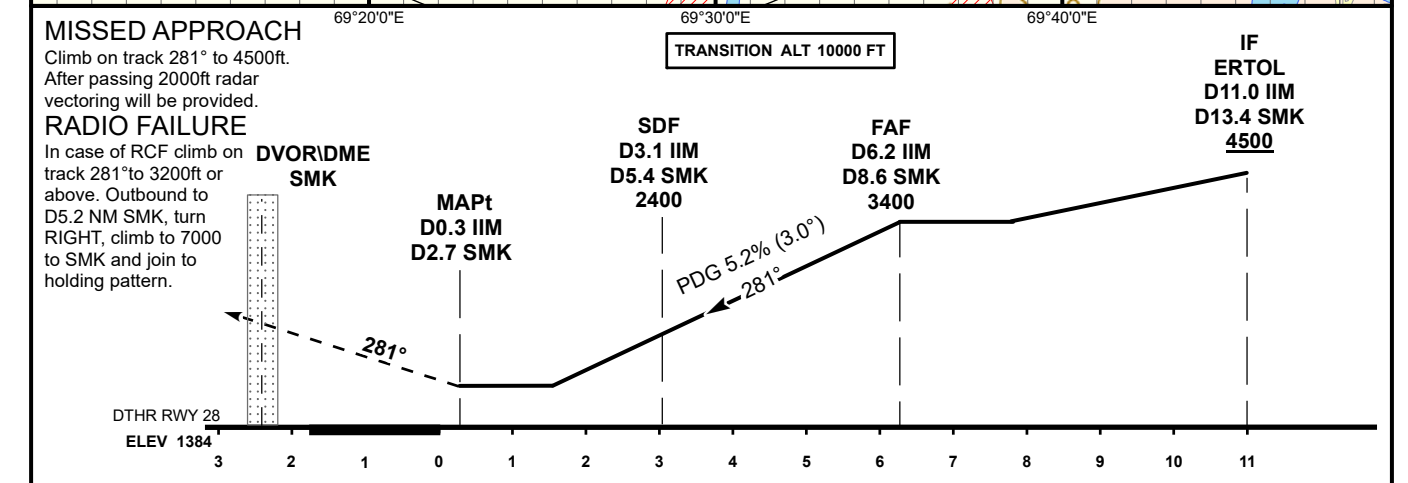


SHYMKENT
LOC/DME
RWY 28



Aircraft Category		A	B	C	D	DIST to DTHR DME IIM	NM	1.0	2.0	3.0	4.0	5.0	6.2
Straight-in Approach OCA/H						DME SMK	NM	3.4	4.4	5.4	6.4	7.4	8.6
	LLZ (GP INOP) SDF	1930(540)	1930(540)	1930(540)	1930(540)	ALTITUDE	FT	1754	2073	2391	2710	3028	3400
	LLZ (GP INOP) WO SDF	2340(960)	2340(960)	2340(960)	2340(960)	HEIGHT	FT	(367)	(686)	(1004)	(1323)	(1641)	(2013)

DME IIM ZERO RANGED TO THR RWY 28

Aerodrome Operating Minima MDH ft x RVR (CMV)	LLZ (GP INOP)															
						GS	Kt	80	100	120	140	160	180			
						Desc.Rate(5.2%)	ft/min	420	530	630	740	840	950			
						FAF-MAPT(5.9NM)	min:sec	4:30	3:36	3:00	2:34	2:15	2:00			

SHYMKENT
LOC/DME

AERONAUTICAL DATA TABULATION

LOC/DME approach to RWY28 from ARMUS, ERTOL	
Fix/point	Coordinates
(SDF) D3.1 IIM, D5.4 SMK	42° 20' 49.0"N 069° 33' 32.6"E
(FAF) D6.2 IIM, D8.6 SMK	42° 19' 55.4"N 069° 37' 38.4"E
ERTOL (IF) D11.1 IIM, D13.4 SMK	42° 18' 33.5"N 069° 43' 53.6"E
ARMUS (IAF) R079°, D14.5 SMK	42° 23' 44.6"N 069° 45' 55.9"E
SMK DVOR/DME	42° 22' 20.4"N 069° 26' 30.6"E
IIM LOC	42° 22' 13.7"N 069° 27' 01.5"E
DTHR RWY 28	42° 21' 40.62"N 069° 29' 34.86"E
Final approach descent angle is 3°	